

Motori C.C. eccitazione separata

Shunt field D.C. motors



Motori C.C. eccitazione separata
Shunt field D.C. motors

Potenza da 0.18kW a 18.4kW
Power from 0.18kW to 18.4kW

ME80 - 100 - 112 - 132

IC01

Motori C.C. eccitazione separata - Potenza da 0.38kW a 14.7kW Shunt field D.C. motors - Power from 0.38kW to 14.7kW

CARATTERISTICHE PRINCIPALI

- Motori C.C. a norme CEI ed IEC.
- Eccitazione separata con serie stabilizzatrice.
- Poli ausiliari su tutte le grandezze.
- Tensione armatura 170V-290V-400V-440V.
- Protezione IP23 - servizio continuo S1.
- Autoventilati IC01.
- Scatola morsetti.

MAIN FEATURES

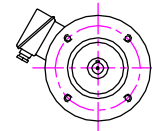
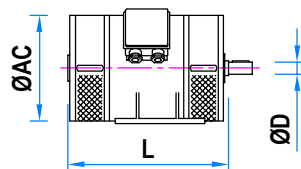
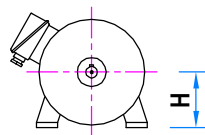
- D.C. motors according to CEI and IEC standards.
- Shunt field with series stabilizer.
- Interpoles on all sizes.
- Armature voltage 170V-290V-400V-440V.
- IP23 protection - continuous duty S1.
- Self ventilated IC01.
- Terminal box.



Tipo / Type	ØAC	L	Potenza a / Power at		
			1500rpm	2000rpm	3000rpm
ME80R	157	285	0.38 kW	0.5 kW	0.75 kW
ME80S	157	305	0.5 kW	0.67 kW	1 kW
ME100R	192	310	0.65 kW	0.87 kW	1.3 kW
ME100S	192	330	0.9 kW	1.25 kW	1.8 kW
ME100T	192	330	1.1 kW	1.5 kW	2.2 kW
ME112R	220	335	1.5 kW	2 kW	3 kW
ME112S	220	335	1.85 kW	2.5 kW	3.7 kW
ME112T	220	375	2.2 kW	2.9 kW	4.4 kW
ME112L	220	405	2.6 kW	3.4 kW	5.1 kW
ME132R	260	390	3.2 kW	4.2 kW	6.3 kW
ME132S	260	415	4.1 kW	5.5 kW	8.2 kW
ME132T	260	440	5 kW	6.8 kW	-
ME132L	260	480	6.2 kW	-	-

Tipo / Type	ØAC	L	Potenza a / Power at		
			1500rpm	2000rpm	3000rpm
ME80R	157	285	-	-	-
ME80S	157	305	-	-	-
ME100R	192	310	0.75 kW	1 kW	1.5 kW
ME100S	192	330	1 kW	1.3 kW	2 kW
ME100T	192	330	1.25 kW	1.7 kW	2.5 kW
ME112R	220	335	1.7 kW	2.2 kW	3.2 kW
ME112S	220	335	2.1 kW	2.7 kW	4 kW
ME112T	220	375	2.5 kW	3.3 kW	4.9 kW
ME112L	220	405	2.8 kW	3.8 kW	5.6 kW
ME132R	260	390	3.7 kW	5.2 kW	7.4 kW
ME132S	260	415	4.8 kW	6.4 kW	9.6 kW
ME132T	260	440	5.9 kW	8.1 kW	11.8 kW
ME132L	260	480	7.35 kW	10.3 kW	14.7 kW

Motori C.C. eccitazione separata
Shunt field D.C. motors



IEC B5	IEC B14
71	-
80	-
90	-
100	100
112	112
132	132

Tipo / Type	ØD	H
ME80	14-16-19	80
ME100	19-24	100
ME112	24-28	112
ME132	28-38	132

OPZIONI :

- Flange e alberi speciali
- Dinamo e/o encoder
- Freno di sicurezza
- Fili uscenti

OPTIONS :

- Special shafts and flanges
- Tacho and/or encoder
- Safety brake
- Free wires

Motori C.C. eccitazione separata - Potenza da 0.44kW a 18.4kW Shunt field D.C. motors - Power from 0.44kW to 18.4kW

CARATTERISTICHE PRINCIPALI

- Motori C.C. a norme CEI ed IEC.
- Eccitazione separata con serie stabilizzatrice.
- Poli ausiliari su tutte le grandezze.
- Tensione armatura 170V-290V-400V-440V.
- Protezione IP23 (IP54 per IC37)- servizio continuo S1.
- Servoventilati IC06 da ventilatore addossato.
- Servoventilati IC17/IC37 da ventilatore esterno.

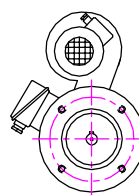
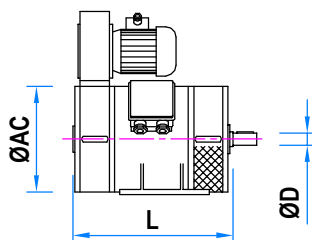
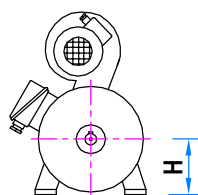
MAIN FEATURES

- D.C. motors according to CEI and IEC standards.
- Shunt field with series stabilizer.
- Interpoles on all sizes.
- Armature voltage 170V-290V-400V-440V.
- IP23 protection (IP54 for IC37)- continuous duty S1.
- Force ventilated IC06 by blower on the motor.



Motori C.C. eccitazione separata
Shunt field D.C. motors

Tipo / Type	ØAC	L	Potenza a / Power at			Potenza a / Power at		
			1500rpm	2000rpm	3000rpm	1500rpm	2000rpm	3000rpm
ME80R	157	285	0.44 kW	0.6 kW	0.88 kW	-	-	-
ME80S	157	305	0.6 kW	0.74 kW	1.1 kW	-	-	-
ME100R	192	310	0.74 kW	1 kW	1.5 kW	-	-	-
ME100S	192	330	1 kW	1.3 kW	2 kW	-	-	-
ME100T	192	330	1.25 kW	1.6 kW	2.4 kW	-	-	-
ME112R	220	335	1.6 kW	2.2 kW	3.2 kW	1.8 kW	2.5 kW	3.7 kW
ME112S	220	335	2.1 kW	2.7 kW	4 kW	2.35 kW	3.1 kW	4.6 kW
ME112T	220	375	2.4 kW	3.2 kW	4.9 kW	2.8 kW	3.7 kW	5.6 kW
ME112L	220	405	2.8 kW	3.7 kW	5.6 kW	3.1 kW	4.2 kW	6.25 kW
ME132R	260	390	3.3 kW	4.7 kW	6.7 kW	4.4 kW	5.5 kW	8.1 kW
ME132S	260	415	-	-	-	5.2 kW	6.7 kW	10.3 kW
ME132T	260	440	-	-	-	6.6 kW	8.8 kW	13.2 kW
ME132L	260	480	-	-	-	9.6 kW	12.5 kW	18.4 kW



IEC B5	IEC B14
71	-
80	-
90	-
100	100
112	112
132	132

Tipo / Type	ØD	H
ME80	14-16-19	80
ME100	19-24	100
ME112	24-28	112
ME132	28-38	132

OPZIONI :

- Flange e alberi speciali
- Dinamo e/o encoder
- Freno di sicurezza
- Fili uscenti

OPTIONS :

- Special shafts and flanges
- Tacho and/or encoder
- Safety brake
- Free wires

Motori C.C. eccitazione separata - Potenza da 0.18kW a 6.6kW Shunt field D.C. motors - Power from 0.18kW to 6.6kW

CARATTERISTICHE PRINCIPALI

- Motori a norme CEI ed IEC.
- Eccitazione separata con serie stabilizzatrice.
- Poli ausiliari su tutte le grandezze.
- Tensione armatura 170V-290V-400V-440V.
- Protezione IP54/IP55 - servizio continuo S1.
- Senza ventilazione IC410.
- Scatola morsetti.

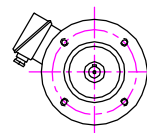
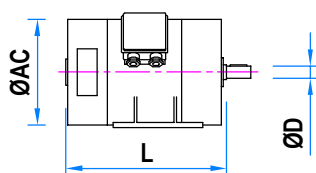
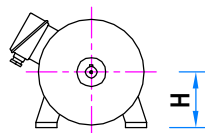
MAIN FEATURES

- D.C. motors according to CEI and IEC standards.
- Shunt field with series stabilizer.
- Interpoles on all sizes.
- Armature voltage 170V-290V-400V-440V.
- IP54/IP55 protection - continuous duty S1.
- No ventilated IC410.
- Terminal box.



Tipo / Type	ØAC	L	Potenza a / Power at		
			1500rpm	2000rpm	3000rpm
ME80R	157	285	0.18 kW	0.25 kW	0.37 kW
ME80S	157	305	0.22 kW	0.3 kW	0.44 kW
ME100R	192	310	0.37 kW	0.51 kW	0.74 kW
ME100S	192	330	0.44 kW	0.6 kW	0.88 kW
ME100T	192	330	0.6 kW	0.74 kW	1.1 kW
ME112R	220	335	0.74 kW	1 kW	1.5 kW
ME112S	220	335	0.96 kW	1.25 kW	1.8 kW
ME112T	220	375	1.1 kW	1.5 kW	2.2 kW
ME112L	220	405	1.27 kW	1.7 kW	2.5 kW
ME132R	260	390	1.5 kW	2 kW	4 kW
ME132S	260	415	1.8 kW	2.4 kW	3.7 kW
ME132T	260	440	2.35 kW	3.2 kW	4.8 kW
ME132L	260	480	2.8 kW	3.7 kW	5.6 kW

Tipo / Type	ØAC	L	Potenza a / Power at		
			1500rpm	2000rpm	3000rpm
ME80R	157	285	-	-	-
ME80S	157	305	-	-	-
ME100R	192	310	-	-	-
ME100S	192	330	-	-	-
ME100T	192	330	-	-	-
ME112R	220	335	-	-	-
ME112S	220	335	-	-	-
ME112T	220	375	-	-	-
ME112L	220	405	1.5 kW	2 kW	2.9 kW
ME132R	260	390	1.7 kW	2.3 kW	3.4 kW
ME132S	260	415	2.1 kW	2.9 kW	4.3 kW
ME132T	260	440	2.7 kW	3.6 kW	5.4 kW
ME132L	260	480	3.3 kW	4 kW	6.6 kW



IEC B5	IEC B14
71	-
80	-
90	-
100	100
112	112
132	132

Tipo / Type	ØD	H
ME80	14-16-19	80
ME100	19-24	100
ME112	24-28	112
ME132	28-38	132

OPZIONI :

- Flange e alberi speciali
- Dinamo e/o encoder
- Freno di sicurezza
- Fili uscenti

OPTIONS :

- Special shafts and flanges
- Tacho and/or encoder
- Safety brake
- Free wires