

Motori C.C. alimentazione da batteria

D.C. Motors battery supply



Motori C.C. alimentazione da batteria
D.C. Motors battery supply

Potenza da 25W a 14kW
Power from 25W to 14kW

M4835 - M5946

Motori C.C. alimentazione da batteria - Potenza da 25W a 115W D.C. Motors battery supply - Power from 25W to 115W

CARATTERISTICHE PRINCIPALI

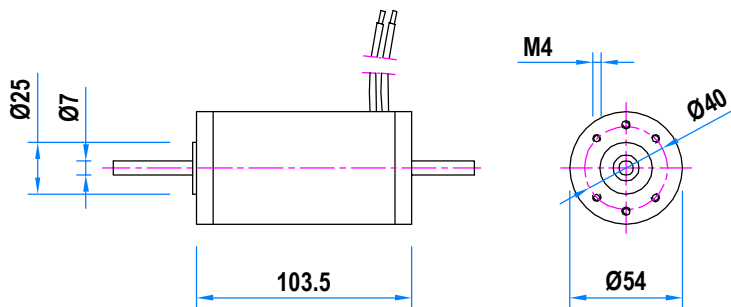
- Motori C.C. a norme CEI ed IEC.
- 2 poli - magneti permanenti.
- Alimentazione da batteria 12V-24V.
- Grado di protezione IP54.
- Isolamento classe F.
- Servizio intermittente.

MAIN FEATURES

- D.C. motors according to CEI and IEC standards.
- 2 poles - permanent magnet.
- Battery supply 12V-24V.
- Degree of protection IP54.
- Insulation F class.
- Intermittent duty.

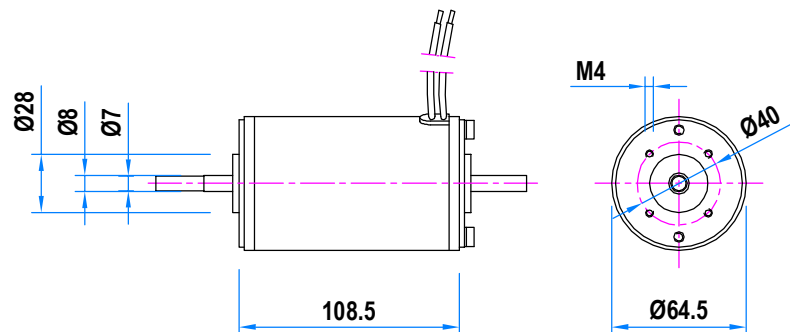
Tipo / Type	Potenza a / Power at 1500rpm / 12V	Power at 2000rpm / 12V
M4835	25 W	35 W

Tipo / Type	Potenza a / Power at 3000rpm / 24V	Power at 4000rpm / 24V
M4835	50 W	65 W



Tipo / Type	Potenza a / Power at 1500rpm / 12V	Power at 2000rpm / 12V
M5946	45 W	60 W

Tipo / Type	Potenza a / Power at 3000rpm / 24V	Power at 4000rpm / 24V
M5946	90 W	115 W



M7152 - M7255

Motori C.C. alimentazione da batteria - Potenza da 80W a 345W D.C. Motors battery supply - Power from 80W to 345W

CARATTERISTICHE PRINCIPALI

- Motori C.C. a norme CEI ed IEC.
- M7152/2 poli, M7255/4 poli - magneti permanente.
- Alimentazione da batteria 12V-24V.
- Grado di protezione IP54.
- Isolamento classe F.
- Servizio intermittente.

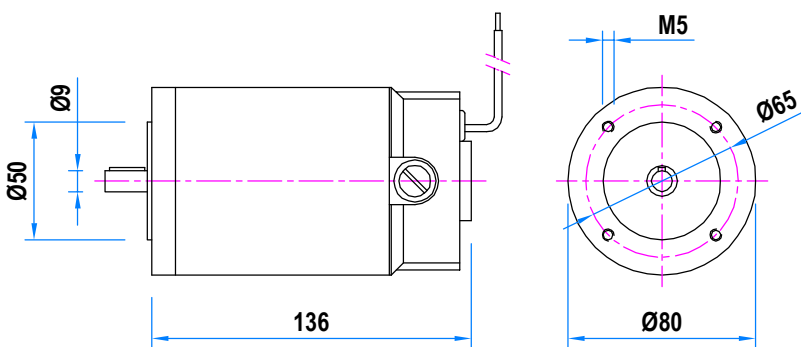
MAIN FEATURES

- D.C. motors according to CEI and IEC standards.
- M7152/2 poles, M7255/4 poles - permanent magnet.
- Battery supply 12V-24V.
- Degree of protection IP54.
- Insulation F class.
- Intermittent duty.

Motori C.C. alimentazione da batteria
D.C. Motors battery supply

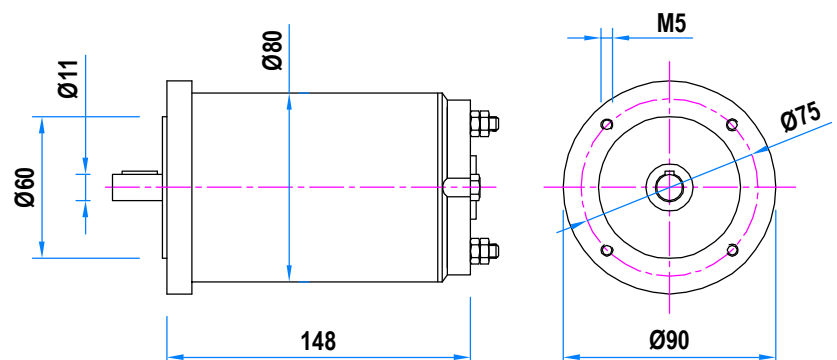
Tipo / Type	Potenza a / Power at 1500rpm / 12V	Power at 3000rpm / 12V
M7152	80 W	150 W

Tipo / Type	Potenza a / Power at 3000rpm / 24V
M7152	165 W



Tipo / Type	Potenza a / Power at 1500rpm / 12V
M7255.2	175 W

Tipo / Type	Potenza a / Power at 3000rpm / 24V
M7255.2	345 W



LN - LV56

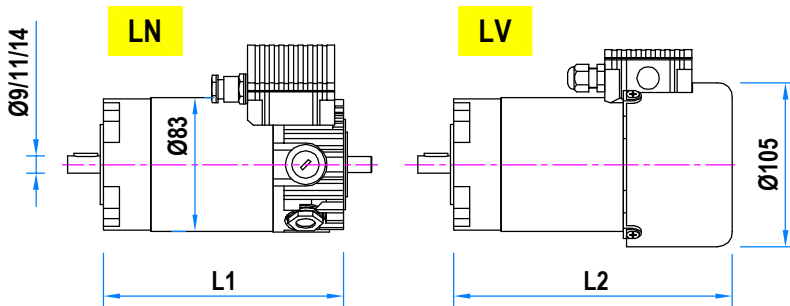
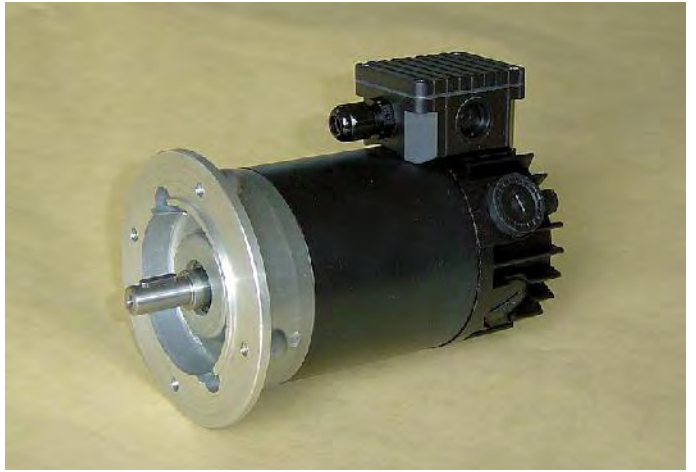
Motori C.C. alimentazione da batteria - Potenza da 85W a 600W D.C. Motors battery supply - Power from 85W to 600W

CARATTERISTICHE PRINCIPALI

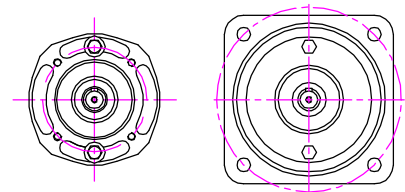
- Motori C.C. a norme CEI ed IEC.
- 2 poli - magnete permanente.
- Alimentazione da batteria 12V-24V-48V.
- Isolamento cl. F e H.
- LN senza ventilazione - grado di protezione IP54.
- LV autoventilato - grado di protezione IP54.
- Scatola morsetti.

MAIN FEATURES

- D.C. motors according to CEI and IEC standards.
- 2 poles - permanent magnet.
- Battery supply 12V-24V-48V.
- Insulation F and H class.
- LN no ventilated - degree of protection IP54.
- LV self ventilated - degree of protection IP54.
- Terminal box.



IEC 56 B14 Ø80 IEC 56 B5 Ø120
IEC 63 B14 Ø90 IEC 63 B5 105x105
IEC 71 B14 Ø105 IEC 71 B5 120x120



Tipo / Type	L1	Potenza a / Power at		
		1500rpm	2000rpm	3000rpm
LN56.5	149	85 W	110 W	165 W
LN56.10	196	165 W	220 W	330 W
LN56.15	241	250 W	330 W	500 W

Max. 200W a / at 12V - Max. 400W a / at 24V

Tipo / Type	L2	Potenza a / Power at		
		1500rpm	2000rpm	3000rpm
LV56.5	172	100 W	135 W	200 W
LV56.10	219	200 W	270 W	400 W
LV56.15	264	300 W	400 W	600 W

Max. 200W a / at 12V - Max. 400W a / at 24V



OPZIONI :

- Flange e alberi speciali
- Freno di sicurezza esterno
- Cavo
- Montaggio a piedi (B3) h.63

OPTIONS :

- Special shafts and flanges
- External safety brake
- Cable
- Feet mounting (B3) h.63

N505 - N506

Motori C.C. alimentazione da batteria - Potenza da 85W a 470W D.C. Motors battery supply - Power from 85W to 470W

CARATTERISTICHE PRINCIPALI

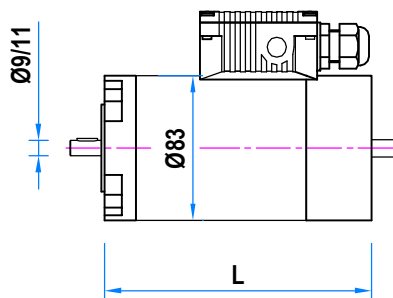
- Motori C.C. a norme CEI ed IEC.
- 4 poli - magnete permanente.
- Alimentazione da batteria 12V-24V-48V.
- Isolamento cl. F e H.
- N505 protezione IP55, N506 protezione IP66.
- Fattore di forma 1 - servizio S1 e S3 - senza ventilazione
- Scatola morsetti.

MAIN FEATURES

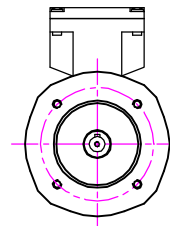
- D.C. motors according to CEI and IEC standards.
- 4 poles - permanent magnet.
- Battery supply 12V-24V-48V.
- Insulation F and H class.
- N505 protection IP55, N506 protection IP66.
- Form factor 1 - duty S1 and S3 - no ventilated.
- Terminal box.



Motori C.C. alimentazione da batteria
D.C. Motors battery supply



IEC 56 B14 Ø80
IEC 63 B14 Ø90



Servizio continuo S1 / Continuous duty S1					
Tipo / Type	L	Potenza a / Power at			
		1500rpm	2000rpm	3000rpm	
N505.5	153.5	85 W	115 W	170 W	
N505.10	200.5	170 W	230 W	340 W	

Servizio intermittente S3 / Intermittent duty S3					
Tipo / Type	L	Potenza a / Power at			
		1500rpm	2000rpm	3000rpm	
N505.5	153.5	115 W	175 W	235 W	
N505.10	200.5	235 W	310 W	470 W	



OPZIONI :

- Flange e alberi speciali
- Freno di sicurezza esterno IP54

OPTIONS :

- Special shafts and flanges
- IP54 external safety brake

LN70

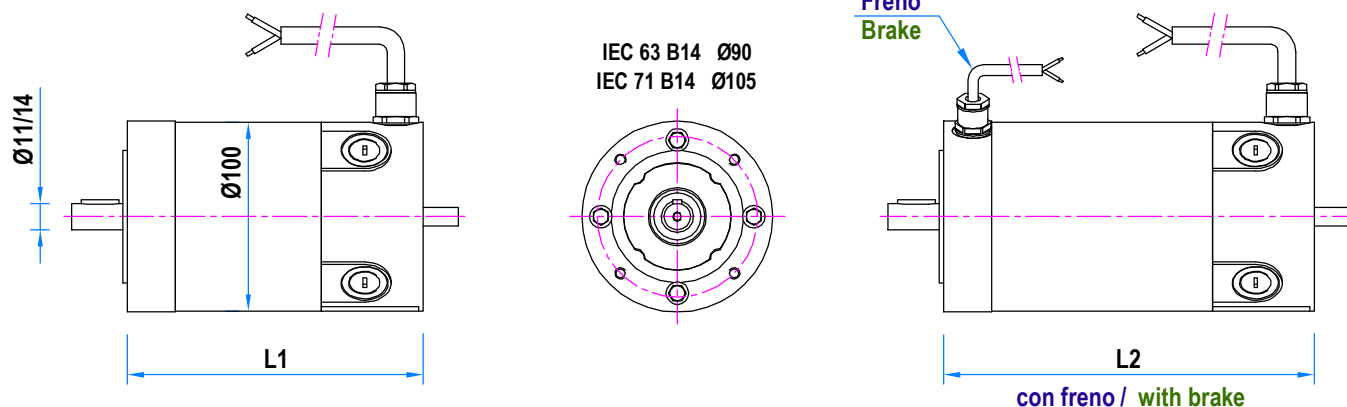
Motori C.C. alimentazione da batteria - Potenza da 160W a 760W D.C. Motors battery supply - Power from 160W to 760W

CARATTERISTICHE PRINCIPALI

- Motori C.C. a norme CEI ed IEC.
- 4 poli - magnete permanente.
- Alimentazione da batteria 12V-24V-48V.
- Grado di protezione IP54.
- Isolamento classe F e H.
- Cavo.

MAIN FEATURES

- D.C. motors according to CEI and IEC standards.
- 4 poles - permanent magnet.
- Battery supply 12V-24V-48V.
- Degree of protection IP54.
- Insulation F and H class.
- Cable.



Tipo / Type	L1	L2	1500rpm	Potenza a / Power at 2000rpm	3000rpm
LN70.5	156.5	187	160 W	215 W	320 W
LN70.10	206.5	237	270 W	360 W	540 W
LN70.15	256.5	287	360 W	480 W	760 W

Max. 360W a / at 12V - Max. 760W a / at 24V



OPZIONI :

- Flange e alberi speciali
- Freno di sicurezza interno o esterno
- Protezione IP66

OPTIONS :

- Special shafts and flanges
- Inside or external safety brake
- IP66 protection

M / MV712 - 714

Motori C.C. alimentazione da batteria - Potenza da 180W a 1200W D.C. Motors battery supply - Power from 180W to 1200W

CARATTERISTICHE PRINCIPALI

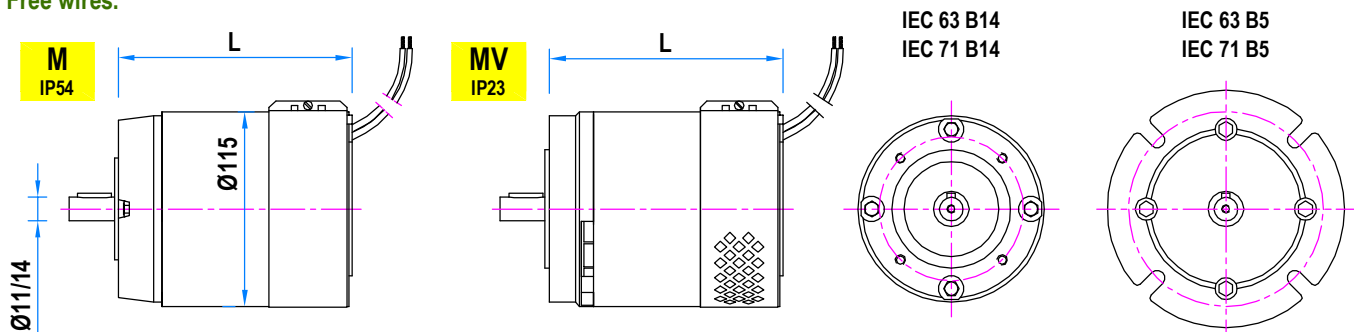
- Motori C.C. a norme CEI ed IEC.
- 2/4 poli - magnete permanente.
- Alimentazione da batteria 12V-24V-48V.
- Isolamento cl. F e H.
- MV autoventilato servizio S1.
- M senza ventilazione servizio S3.
- Fili uscenti.

MAIN FEATURES

- D.C. motors according to CEI and IEC standards.
- 2/4 poles - permanent magnet.
- Battery supply 12V-24V-48V.
- Insulation F and H class.
- MV self ventilated duty S1.
- M not ventilated duty S3.
- Free wires.



Motori C.C. alimentazione da batteria
D.C. Motors battery supply



Tipo /Type	L	Potenza a / Power at		
		1500rpm	2000rpm	3000rpm
M - MV712 / 714.3	156	180 W	240 W	360 W
M - MV712 / 714.5	171	250 W	340 W	500 W
M - MV712 / 714.7	186	300 W	400 W	600 W
M - MV712 / 714.9	218	450 W	600 W	850 W
M - MV712 / 714.13	249	600 W	800 W	1200 W

Max. 400W a / at 12V - Max. 850W a / at 24V



OPZIONI :

- Flange e alberi speciali
- Freno di sicurezza esterno
- Montaggio a piedi (B3) h.63 e h.71
- Protezione IP55
- Connessione con terminali filettati

OPTIONS :

- Special shafts and flanges
- External safety brake
- Feet mounting (B3) h.63 and h.71
- IP55 protection
- Connection with thread terminals

N - V745

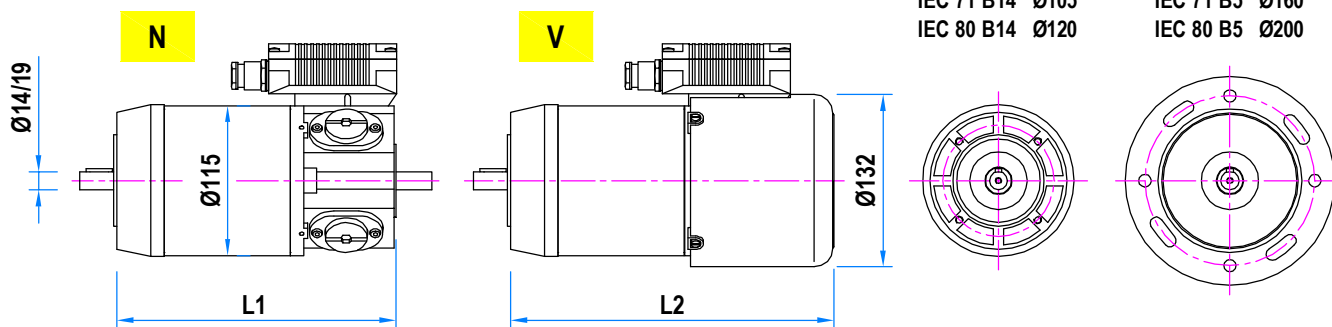
Motori C.C. alimentazione da batteria - Potenza da 0.3kW a 1.8kW D.C. Motors battery supply - Power from 0.3kW to 1.8kW

CARATTERISTICHE PRINCIPALI

- Motori C.C. a norme CEI ed IEC.
- 4 poli - magnete permanente.
- Alimentazione da batteria 12V-24V-48V.
- Isolamento classe F e H.
- N senza ventilazione - grado di protezione IP55.
- V autoventilato - grado di protezione IP55.
- Scatola morsetti.

MAIN FEATURES

- D.C. motors according to CEI and IEC standards.
- 4 poles - permanent magnet.
- Battery supply 12V-24V-48V.
- Insulation F and H class.
- N no ventilated - degree of protection IP55.
- V self ventilated - degree of protection IP55.
- Terminal box.

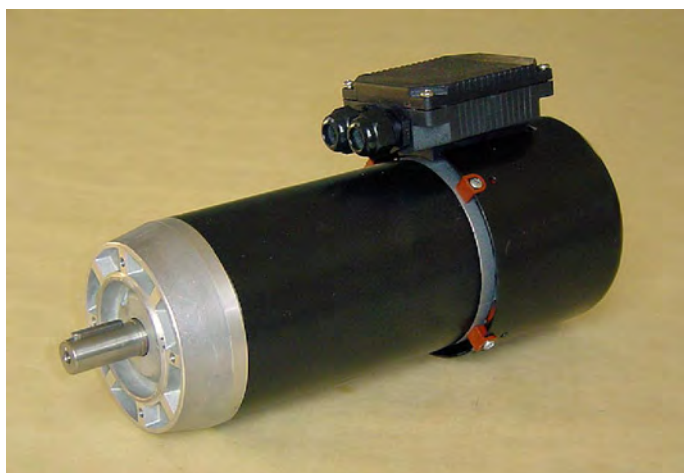


Tipo / Type	L1	Potenza a / Power at		
		1500rpm	2000rpm	3000rpm
N745.6	214	0.3 kW	0.4 kW	0.55 kW
N745.9	247	0.4 kW	0.55 kW	0.75 kW
N745.12	277	0.55 kW	0.75 kW	1 kW
N745.18	337	0.75 kW	1.1 kW	1.3 kW

Max. 0.75kW a / at 12V - Max. 1.5kW a / at 24V

Tipo / Type	L2	Potenza a / Power at		
		1500rpm	2000rpm	3000rpm
V745.6	248	0.40 kW	0.55 kW	0.75 kW
V745.9	281	0.55 kW	0.75 kW	1 kW
V745.12	311	0.75 kW	1 kW	1.3 kW
V745.18	371	1 kW	1.3 kW	1.8 kW

Max. 0.75kW a / at 12V - Max. 1.5kW a / at 24V



OPZIONI :

- Flange e alberi speciali
- Freno di sicurezza esterno IP54
- Cavo
- Montaggio a piedi (B3) h.71
- Protezione IP66

OPTIONS :

- Special shafts and flanges
- IP54 external safety brake
- Cable
- Feet mounting (B3) h.71
- IP66 protection

N - V805 / N806

Motori C.C. alimentazione da batteria - Potenza da 0.55kW a 2.2kW
D.C. Motors battery supply - Power from 0.55kW to 2.2kW

CARATTERISTICHE PRINCIPALI

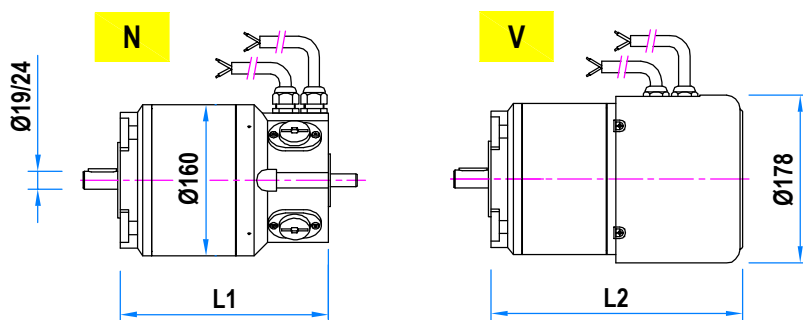
- Motori C.C. a norme CEI ed IEC.
- 4 poli - magnete permanente.
- Alimentazione da batteria 12V \pm 110V.
- Isolamento classe F e H.
- N/V805 protezione IP55, N806 protezione IP66.
- Uscita cavi.

MAIN FEATURES

- D.C. motors according to CEI and IEC standards.
- 4 poles - permanent magnet.
- Battery supply 12V \pm 110V.
- Insulation F and H class.
- N805 protection IP55, N806 protection IP66.
- Free cables.

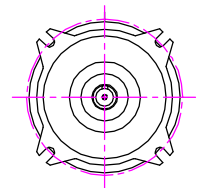
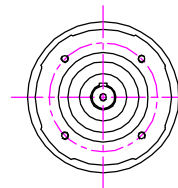


Motori C.C. alimentazione da batteria
D.C. Motors battery supply



IEC 80 B14 Ø120
IEC 90 B14 Ø140

IEC 80 B5 Ø200
IEC 90 B5 Ø200



Tipo / Type	L1	Potenza a / Power at		
		1500rpm	2000rpm	3000rpm
N805.19	222	0.55 kW	0.75 kW	1.1 kW
N805.27	252	0.75 kW	1 kW	1.5 kW
N805.38	277	1.1 kW	1.5 kW	2.2 kW

Max. 1.1kW a / at 12V - Max. 2.2kW a / at 24V

Tipo / Type	L2	Potenza a / Power at		
		1500rpm	2000rpm	3000rpm
V805.19	267	0.55 kW	0.75 kW	1.1 kW
V805.27	297	0.75 kW	1 kW	1.5 kW
V805.38	322	1.1 kW	1.5 kW	2.2 kW

Max. 1.1kW a / at 12V - Max. 2.2kW a / at 24V



OPZIONI :

- Flange e alberi speciali
- Freno di sicurezza esterno IP54
- Montaggio a piedi (B3) h.90
- Morsettiera (solo su N-V 805)

OPTIONS :

- Special shafts and flanges
- IP54 external safety brake
- Terminal box (only for N-V 805)

V88

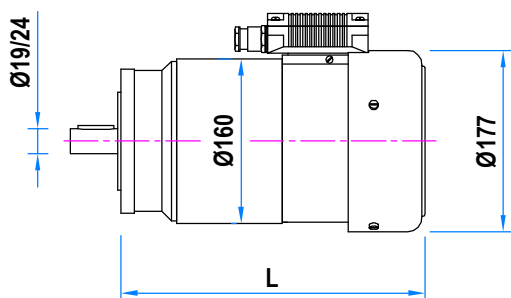
Motori C.C. alimentazione da batteria - Potenza da 1.2kW a 4.4kW D.C. Motors battery supply - Power from 1.2kW to 4.4kW

CARATTERISTICHE PRINCIPALI

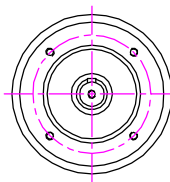
- Motori C.C. a norme CEI ed IEC.
- 4 poli - magnete permanente.
- Alimentazione da batteria 12V ÷ 110V.
- Isolamento classe F e H.
- V autoventilato - grado di protezione IP54.
- Scatola morsetti.

MAIN FEATURES

- D.C. motors according to CEI and IEC standards.
- 4 poles - permanent magnet.
- Battery supply 12V ÷ 110V.
- Insulation F and H class.
- V self ventilated - degree of protection IP54.
- Terminal box.

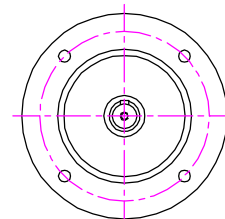


IEC 90 B14 Ø140



IEC 80 B5 Ø200

IEC 90 B5 Ø200



Tipo / Type	L	Potenza a / Power at		
		1500rpm	2000rpm	3000rpm
V88.38	354	1.2 kW	1.5kW	2.2 kW
V88.57	409	1.7 kW	2.2 kW	3.3 kW
V88.81	464	2.2 kW	3 kW	4.4 kW

Max. 1.1kW a / at 12V - Max. 2.2kW a / at 24V - Max. 4.4kW a / at 48V



OPZIONI :

- Flange e alberi speciali
- Freno di sicurezza esterno
- Montaggio a piedi (B3) h.90

OPTIONS :

- Special shafts and flanges
- External safety brake
- Feet mounting (B3) h.90